



Engineered Fluid Dynamics in Endodontic Disinfection

Advancing the clinical standard for debris transport, chemical synergy, and apical safety.

Clinical Evidence & Protocol Integration Framework

Mechanical preparation only builds the channel.

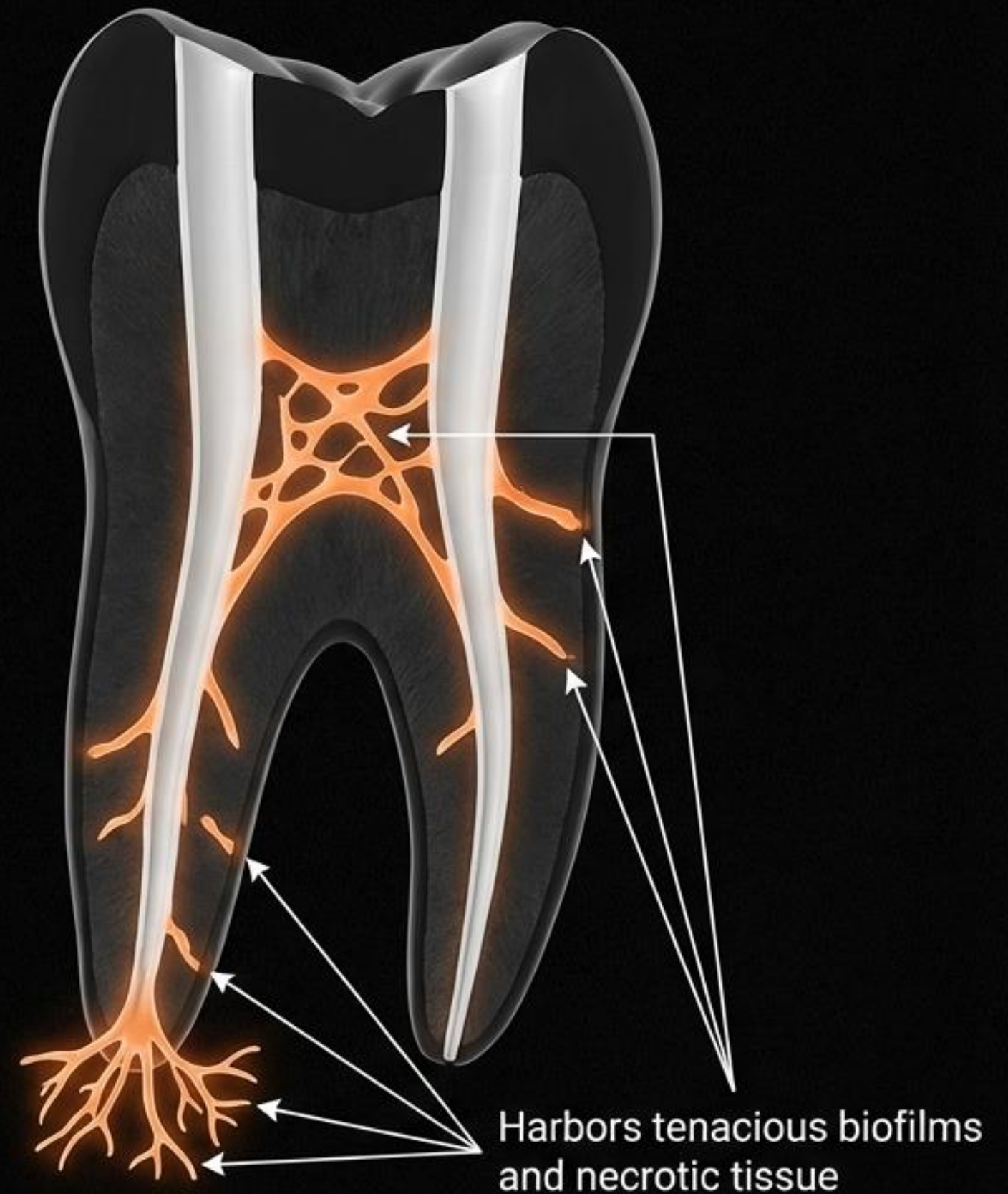
Rotary instrumentation is strictly a mechanical preparatory phase. It removes gross debris and establishes resistance form, but files are fundamentally limited by complex anatomy.

30–40% LIMITATION

Modern mechanical instruments only encompass 30 to 40 percent of the total root canal wall.

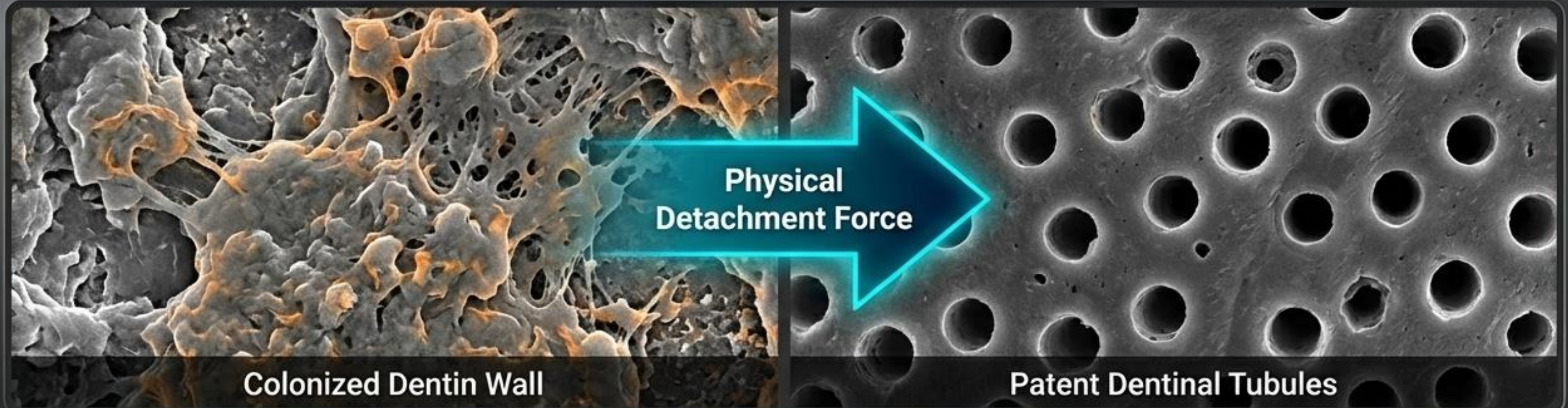
Insight Panel

The remaining 60 to 70 percent of the anatomical space relies entirely on the reach and efficacy of active chemical irrigation.



The biofilm matrix requires active disruption.

The aim of root canal treatment is the prevention or cure of apical periodontitis. However, bacteria do not exist as free-floating cells; they form complex, matrix-embedded biofilms strongly adhered to the canal walls.



Chemical Dissolution: Hypochlorite and EDTA must chemically break down tissue and inorganic smear layers.

Physical Detachment: To transform a colonized wall into patent dentinal tubules, the irrigant cannot sit passively. It requires active physical shear stress to detach the disrupted matrix.

The baseline for disinfection: Chemical Synergy.

Optimal canal cleanliness relies on the continuous replenishment of highly active chemical agents over a sustained contact period.

continuous replenishment cycles



Step 1: NaOCl 2%

Strong oxidizer. Dissolves pulp tissue and provides primary antimicrobial action. Rapidly depleted by organic matter.

Step 2: EDTA Wash

Chelating agent. Demineralizes inorganic tissue, removes the smear layer, and opens dentinal tubules for deeper penetration.

Step 3: NaOCl Flush

Final antimicrobial sweep of the newly exposed, patent dentinal tubules.

The physical limits of apical delivery.

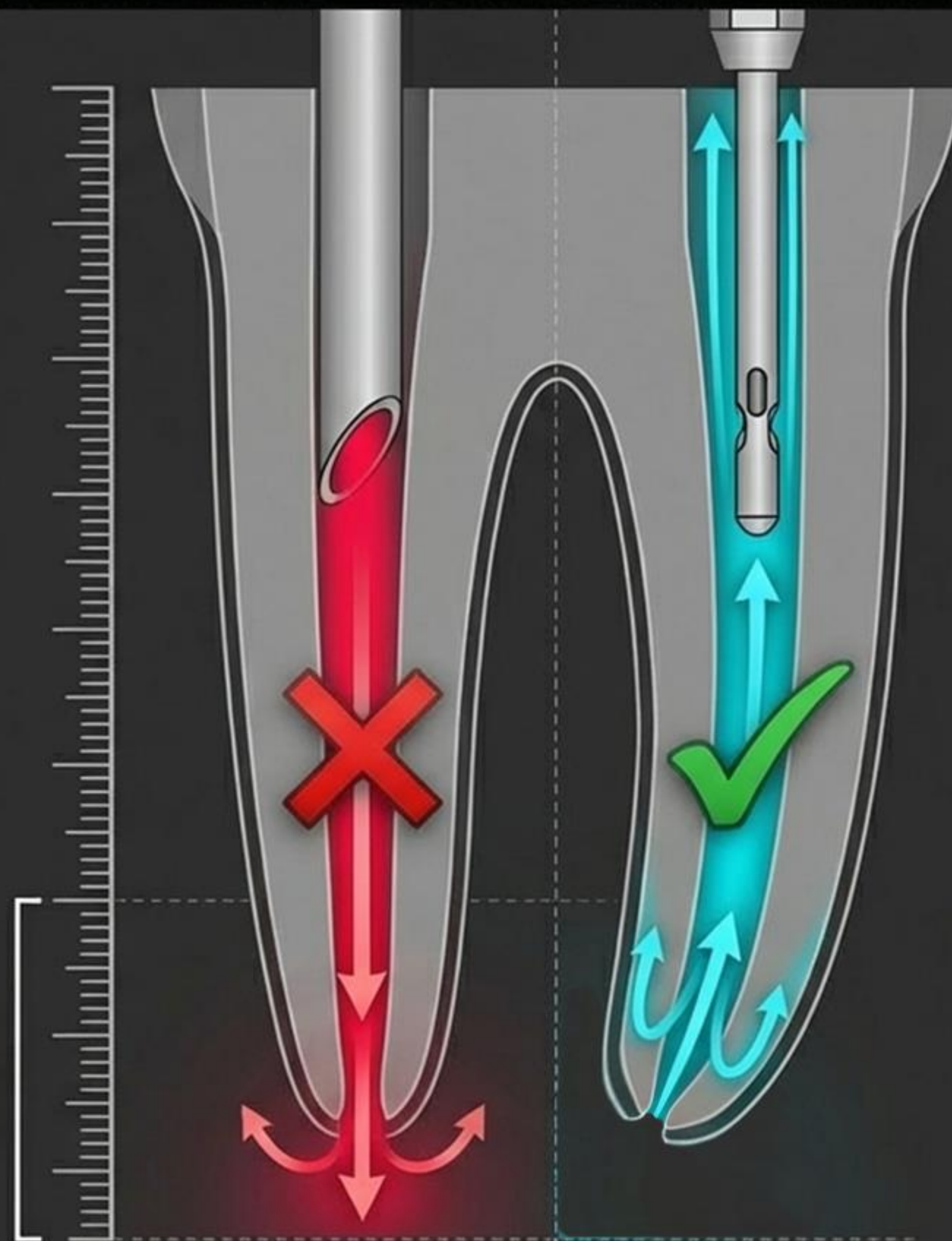
To effectively clean the critical apical third, irrigants must be delivered 1–2mm short of the working length. This proximity introduces the severe risk of a sodium hypochlorite accident.

Prevent Extrusion: Direct apical pressure forces caustic fluids into periapical tissues. Delivery must be laterally deflected.

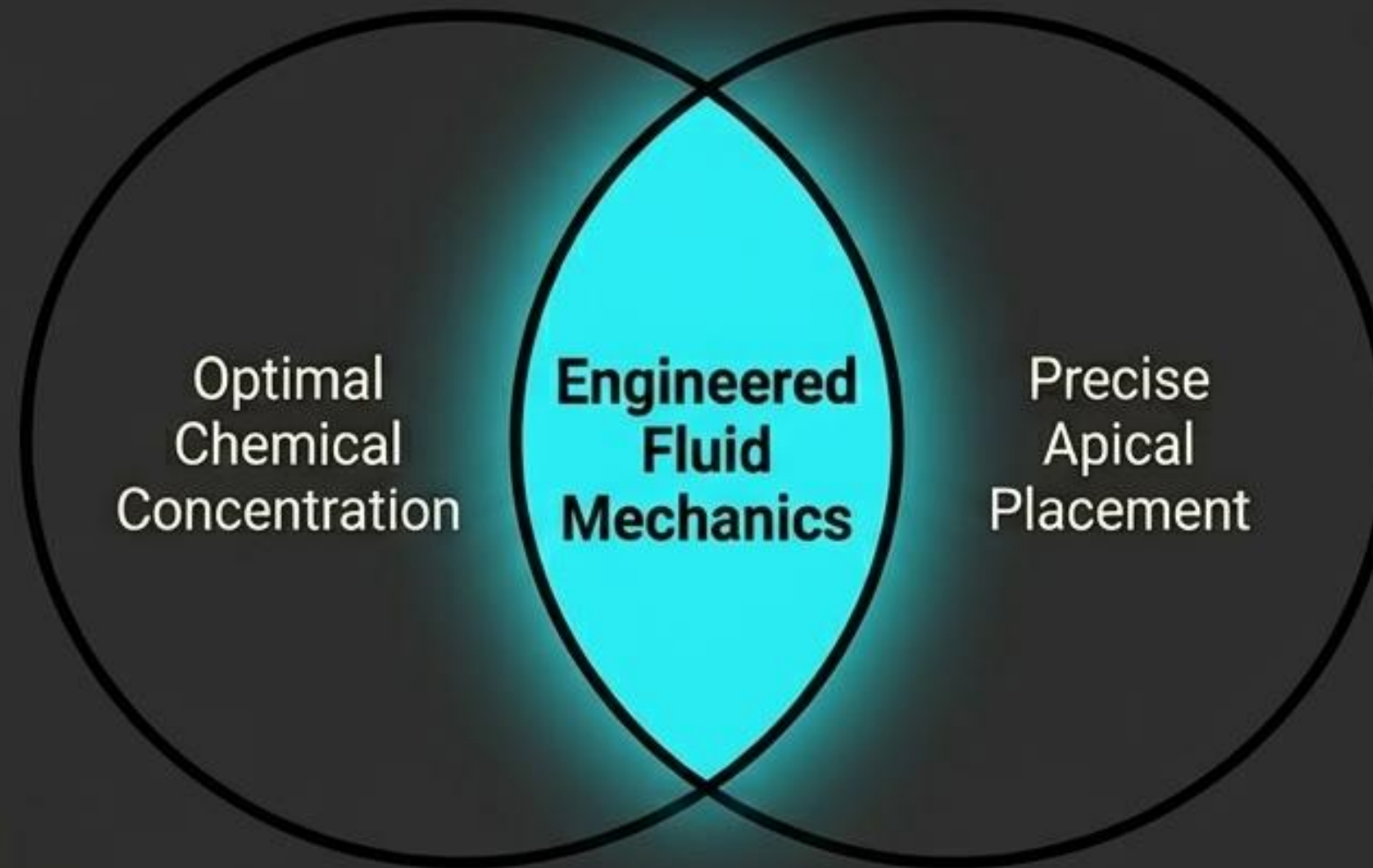
Prevent Binding: Rigid needles bind in curved canals, blocking fluid flow and negating chemical exchange.

Enable Evacuation: The delivery system must allow simultaneous forward injection and coronal reverse flow for debris removal.

The Apical
Safety Zone
(1-2mm Short)



Optimal cleaning is an engineered fluid-dynamic environment.



An irrigation needle is not simply a passive straw for delivering liquid.
It is the **active engine** of the root canal system.

The effectiveness of the chemical protocol is entirely dependent on the physics of its delivery. To safely transport fresh NaOCl to the apex, strip the biofilm, and evacuate the debris, the needle must **manipulate the geometry of fluid flow**.

Introducing VortiFlow Precision Irrigation.

Engineered lateral-flow irrigation with a helical channel concept designed to safely maximize fluid exchange.

VortiFlow is a closed-end, highly flexible polymer cannula engineered to transform standard syringe pressure into a high-velocity, vortex-like fluid environment.

Key Engineering Pillars

- ✓ Closed-end tip for absolute apical safety.
- ✓ Dual lateral vents for targeted wall shear stress.
- ✓ Helical outer geometry for optimized debris transport.



Helical channel geometry: The mechanics of the vortex.

Fluid behavior is dictated by surface architecture. Standard plastic cannulas feature smooth exterior walls that allow random, inefficient fluid escape.

Macro Manufacturing View



Advanced thermal molding establishes continuous spiral channels along the exterior wall.

Micro Fluid Dynamics View



The VortiFlow Mechanism

When irrigant exits the lateral vents, it is captured by the helical channels, translating vertical syringe pressure into a **controlled, swirling vortex**. This continuous rotation ensures lateral spread and highly efficient coronal evacuation of displaced debris.

Generating localized shear stress.

While sonic and ultrasonic activation provide acoustic streaming, the primary mechanism for disrupting tenacious biofilm is continuous, localized shear stress.

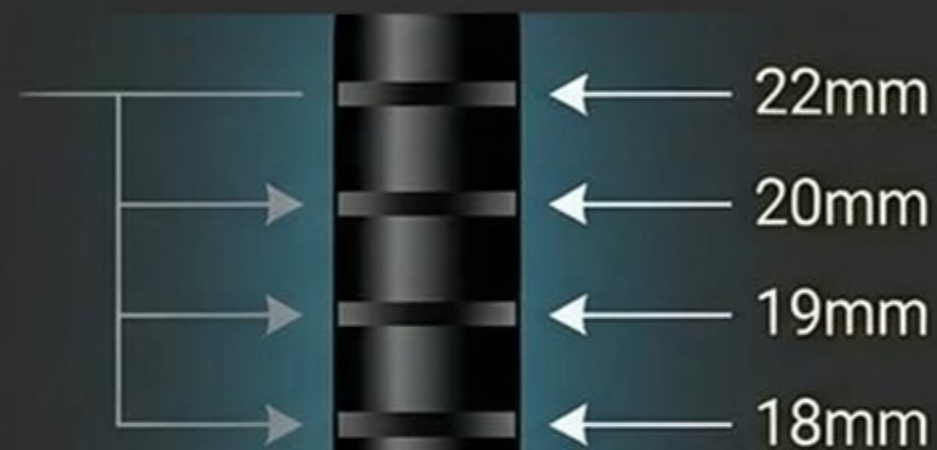
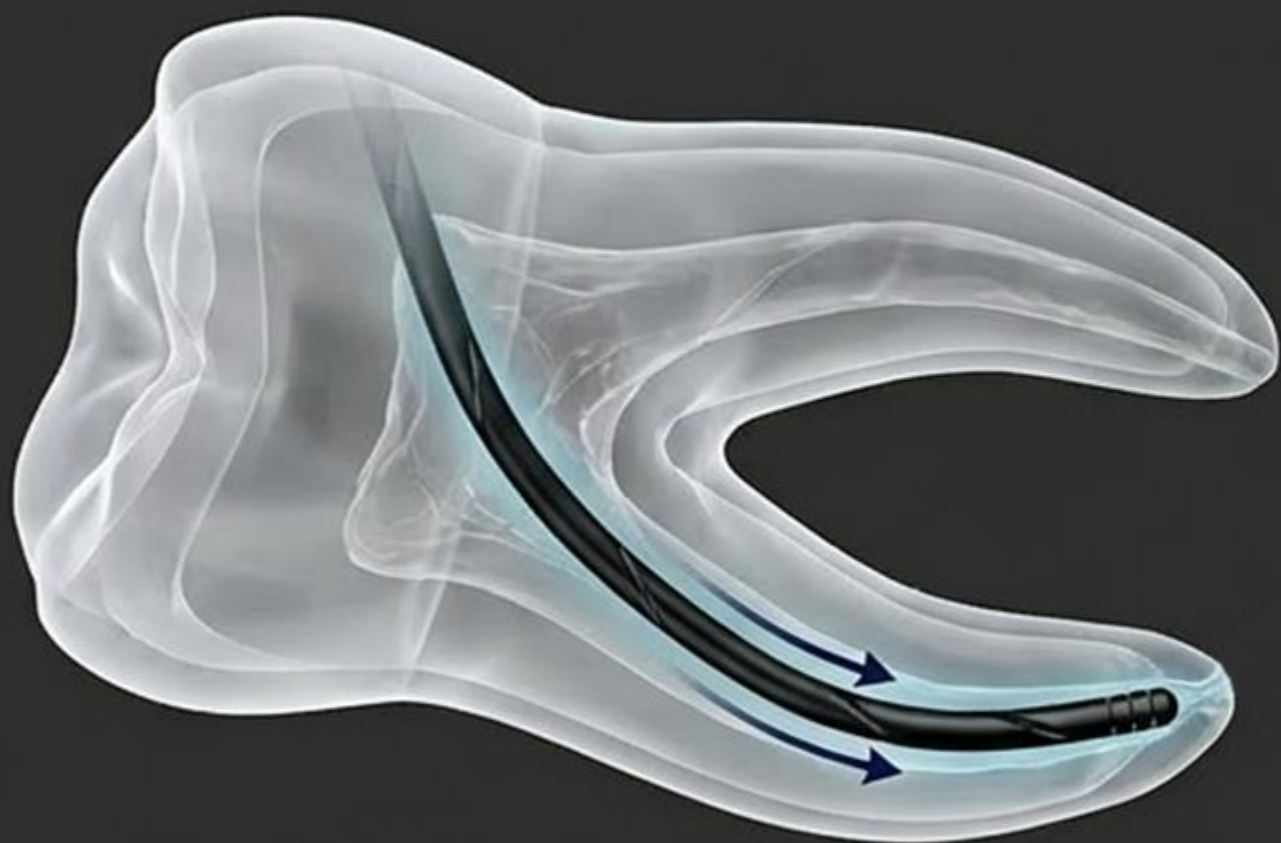
Mechanism of Action

The dual lateral jets direct powerful streams horizontally against the canal walls. The subsequent helical rotation amplifies this mechanical disruption, actively stripping the biofilm layer and maintaining a constant suspension of debris in the evacuation flow.



Anatomical navigation without compromise.

Delivering irrigant to the apical third requires navigating complex curvatures without binding. Rigid stainless steel needles require manual pre-bending and easily wedge into canal walls, immediately choking fluid flow.



30-Gauge / 4% Taper

Calibrated for minimally invasive apical preparations.

Homogeneous Polymer

Bends smoothly up to 60° without kinking.

Integrated Depth Markers

Eliminates the need for manual pre-measuring.

Evaluating irrigation modalities.

	Stainless Steel (Open-Ended)	Standard Plastic (Closed-End)	VortiFlow Helical (Closed-End)
Apical Extrusion Safety	Low (Direct downward pressure)	High	High (100% lateral deflection)
Anatomy Penetration	Low (Rigid, requires pre-bending)	High (Flexible)	High (Flexible polymer)
Fluid Exchange Efficiency	Moderate	Moderate (Uncontrolled reverse flow)	Exceptional (Helical channels control flow)
Debris Transport Mechanics	Linear	Linear	Rotational / Vortex

VortiFlow combines the safety and flexibility of polymers with engineered fluid acceleration previously unavailable in passive needles.

The definitive bridge from shaping to sealing.

Superior outcomes are the result of integrated, predictable systems.
VortiFlow is the engineered core of the modern "Clean" phase.

